

## **Tuscarora Club / Demis Bridge NY-13-05**

Middletown, NY - Delaware County



Photo of Tuscarora Club Bridge



Tuscarora Club Bridge Portal

## Bridge Statistics

**Region:** *Delaware River Valley*

**County:** *Delaware*



**Town:** *Middletown*

**Locality:** *Margaretville*

**Position - Lat:** *N 42 21.792change*

**Lon:** *W 76 35.298change*

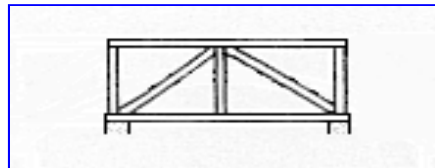
**Owner:** *Tuscarora Club*

**Bridge Carries:** *Foot Trail*

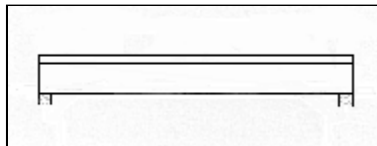
**Bridge Crosses:** *Mill Brook*

**Bridge Traffic:** *Pedestrian (Private)*

**Original Truss Type:** *Kingpost*



**New Superstructure Type:** *Stringer*



**Year Built:** *1870*

**Year Moved:** *1935*

**Builder:** *William Mead*

*Length: 38'-0"*

**Structure Characteristics:** *Width: 12'-10"*

*Lanes: 1*

**Posted Load:** *None*

**Posted Vertical Clearance:** *None*

**World Guide No.:** *32-13-05*

**National Register of Historic Places**

**Date:** *Unknown*

### Description

This bridge is located on the property of the Tuscarora Club south of Margaretville just off Mill Road. This bridge was originally built as a king truss. After being moved to this location it is now a stringer bridge. Still considered a historical bridge, it was built in 1870. The bridge carries a foot trail over Mill Brook. The bridge spans a 38 feet long. **Bridge is located on private property, ask for permission to visit this bridge.**

### Photography

Easy to photograph portal since the bridge has no traffic. A path leads down to the brook with a nice location for a side photo.

### Parking

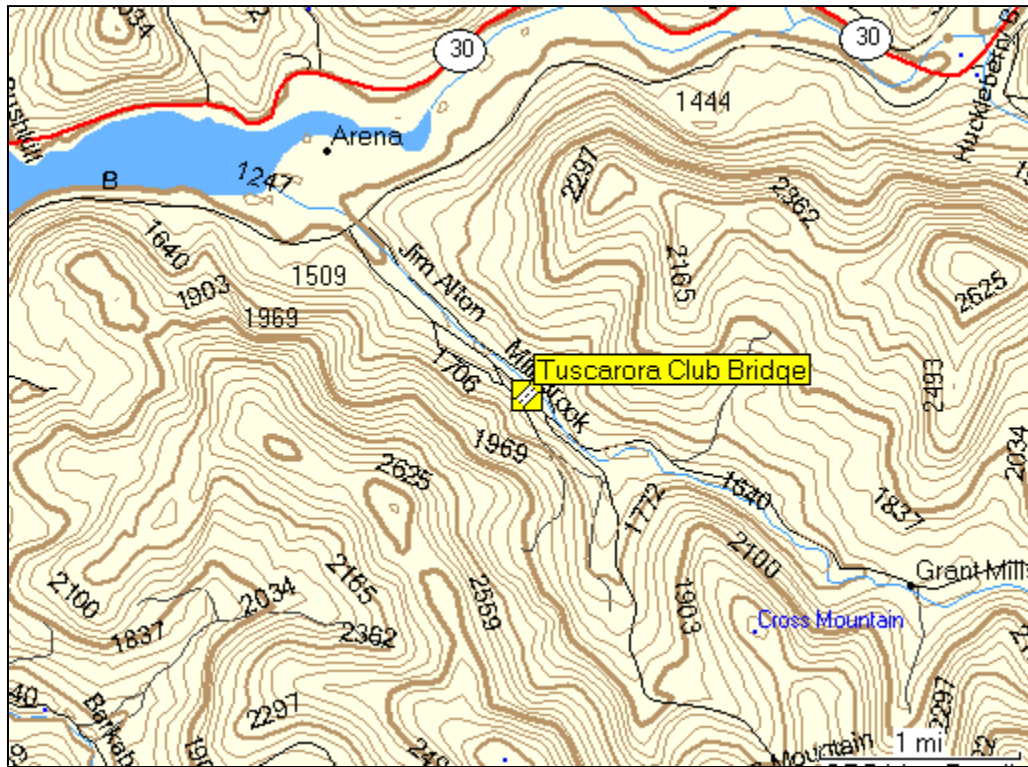
Very little parking available along Mill Brook Road.

### Truss / Arch

Stringer Span

No photo available

## Location Map



## Location

2.2 miles southwest of junction NY30 and Margaretville on NY28, then 0.3 miles left and 0.3 miles right on NYC road along Pepacton Reservoir, 2.8 miles left on Mill Brook Road to D.L. Reese mailbox, and walk 0.1 miles right on road at telephone pole #32/125. Ahead on left down an embankment on a path to the bridge. This bridge is in Delaware County.



[Return to New York Covered Bridges](#)