

## Hyde Hall Bridge - NY-39-01

East Springfield, NY - Otsego County



Photo of Hyde Hall Bridge



Hyde Hall Bridge Portal

## Bridge Statistics

**Region:** *Leatherstock*

**County:** *Otsego*



**Town:** *East Springfield*

**Locality:** *Glimmerglass State Park*

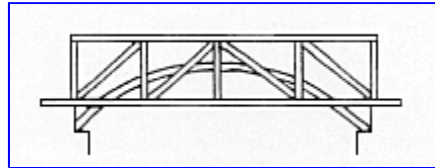
**Owner:** *Unknown*

**Bridge Carries:** *Foot Trail*

**Bridge Crosses:** *Shadow Brook*

**Bridge Traffic:** *Pedestrian*

**Truss Type:** *Burr Arch*



**Year Built:** *1823*

**Builder:** *George Clark*

*Length: 53'-0"*

**Structure Characteristics:** *Width: Unknown*

*Lanes: 1*

**Posted Load:** *None*

**Posted Vertical Clearance:** *None*

**World Guide No.:** *32-39-01*

**National Register of Historic Places**

**Date:** *December 17, 1998*

### Description

The Hyde Hall covered bridge crosses Shadow Brook, is located in Glimmerglass State Park in Otsego County. This Burr Arch was built in 1823, is the oldest covered bridge in New York state. It is a single span of 53 feet. This bridge carries a foot trail over the brook.

### Photography

Easy to photograph portal since the bridge has no traffic. A path leads down to the brook with a nice location for a side photo.

### Parking

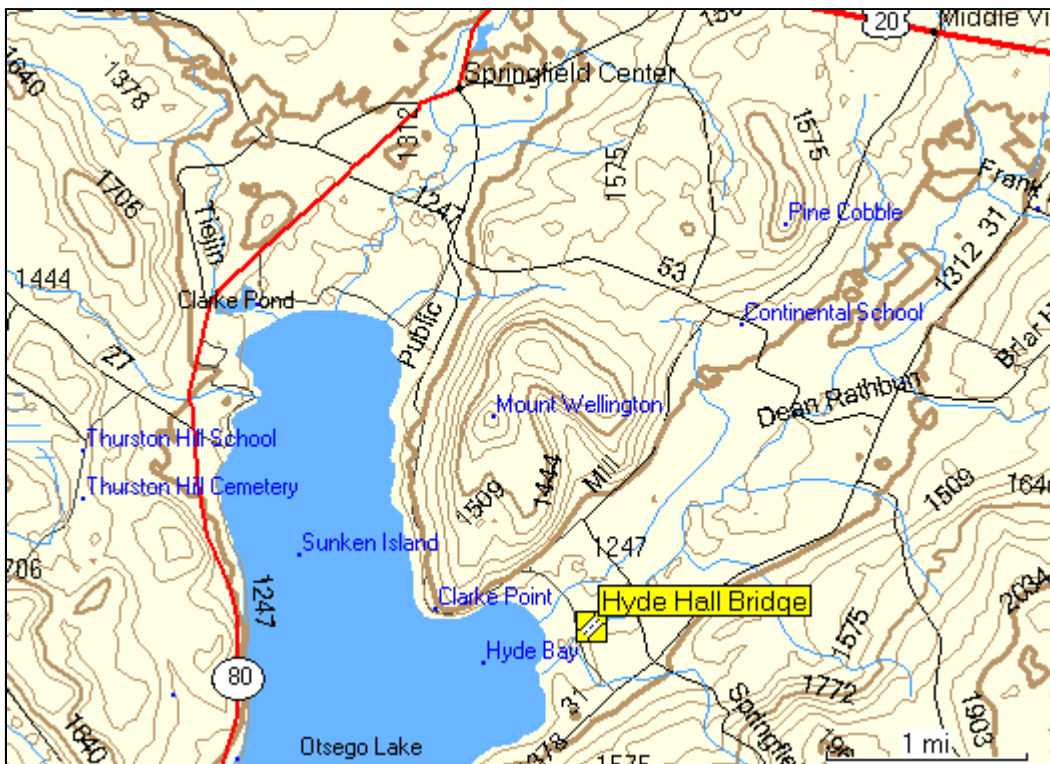
Parking available in Glimmerglass State Park parking area near the bridge.

### Truss / Arch

Burr Arch

No photo available

## Location Map



### Location

4.5 miles south of US20 and East Springfield to entrance on W side of CR31 on East Lake Road. The bridge is located a short distance from Otsego Lake, in Glimmerglass State Park, Otsego County.



[Return to New York State Covered Bridges](#)