

**Fitches
Bridge - NY-13-02**

Delhi, NY - Delaware County



Fitches bridge on January 5, 2002



Fitches Bridge Portal - January 5, 2002



Fitches bridge before 2001

Bridge Statistics

Region: *Catskills - Delaware River Valley*

County: *Delaware*



Town: *Delhi*

Locality: *East Delhi*

Position - Lat: *N 42 17.862*

Lon: *W 74 52.763*

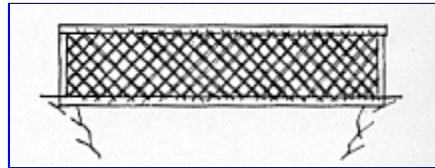
Owner: *Unknown*

Bridge Carries: *Fitches Bridge Road*

Bridge Crosses: *West Branch Delaware River*

Bridge Traffic: *Vehicular*

Truss Type: *Town Lattice*



Year Built: *1870*

Builder: *James Frazier & James Warren*

Moved By: *David Wright*

Length: 100'-0"

Structure Characteristics: *Width: Unknown*

Lanes: 1

Posted Load: *3 Tons*

Posted Vertical Clearance: *9'-0"*

World Guide No.: *32-13-02*

National Register of Historic Places

Date: *April 29, 1999*

Description

This historical covered bridge is located in East Delhi NY, Delaware County. The bridge carries Fitches Bridge Road over the West Branch of the Delaware River. It is a 100 foot long Town Lattice Truss. This bridge was built in 1870 in Delhi on Kingston Street, in 1885 a bridge company persuaded town officials to replace the bridge with an iron structure. Rather than demolish a comparatively new covered bridge, it was decided to moved this bridge three miles upstream from its present location to replace a bridge washed away by floodwaters. Divid Wright and a town crew dismantled the bridge and hauled it to East Delhi, to its present location. A major rehabilitation took place in 2001. See additional information below.

Photography

Good locations for portal shots on either end of bridge. Elevation views from stream or from above bridge along NY10.

Parking

Cross bridge from NY10, parking on road parallel to NY10.

Additional Information / Web Links

Major rehabilitation in 2001. [Rehab Link](#)

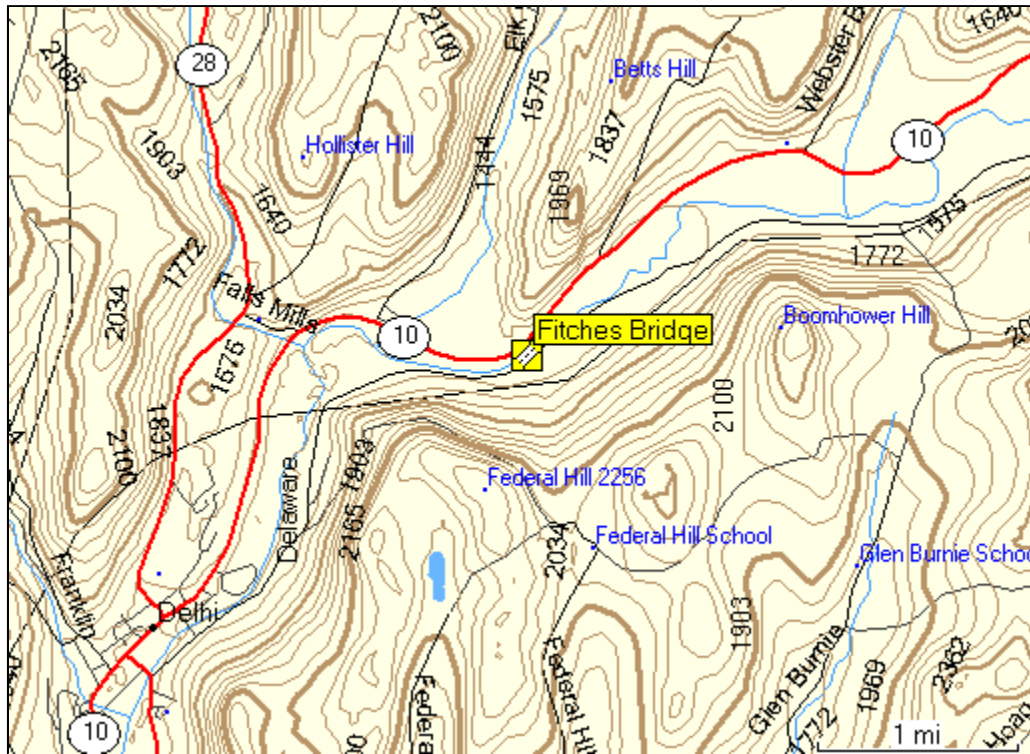
[Fitches Family Link](#)

Truss / Arch



Town Lattice Truss

Location Map



Location

3.5 miles northeast of junction NY28 and Delhi on NY10, then just right on Fitches Bridge Road. The bridge is located near East Delhi in Delaware County.



[Return to New York Covered Bridges](#)