

**Erpf Bridge**  
**NY-13-08**

Arkville, NY - Delaware County



**Erpf Bridge**  
*Photo by Dick Wilson - 11/90*



**Erpf Portal**  
*Photo by Dick Wilson - 11/90*

## Bridge Statistics

**Region:** *Catskills*

**County:** *Delaware*



**Town:** *Arkville*

**Locality:** *Unknown*

**Position - Lat:** *N 42 08.704°*

**Lon:** *W 74 36.233°*

**Type:** *Authentic*

**Owner:** *Unknown*

**Bridge Carries:** *Erpf*

**Bridge Crosses:** *Brook*

**Bridge Traffic:** *Vehicular*

**Superstructure Type:** *Town Lattice Truss*

**Year Built:** *1964*

**Builder:** *Seager Fairbairn*

*Length: 31'-0"*

**Structure Characteristics:** *Width: Unknown*

*Lanes: 1*

**Posted Load:** *None*

**Posted Vertical Clearance:** *None*

**World Guide No.:** *32-13-08*

**National Register of Historic**

**Places Date:** *Not Applicable*

### Description

This authentic non historical covered bridge in Arkville NY, Delaware County, crosses tbe a small brook. It is a Town Lattice Truss with a span of 31 feet. This bridge was built in 1964.

### Photography

Have not photographed this bridge. Photos courtesy of Dick Wilson.

### Parking

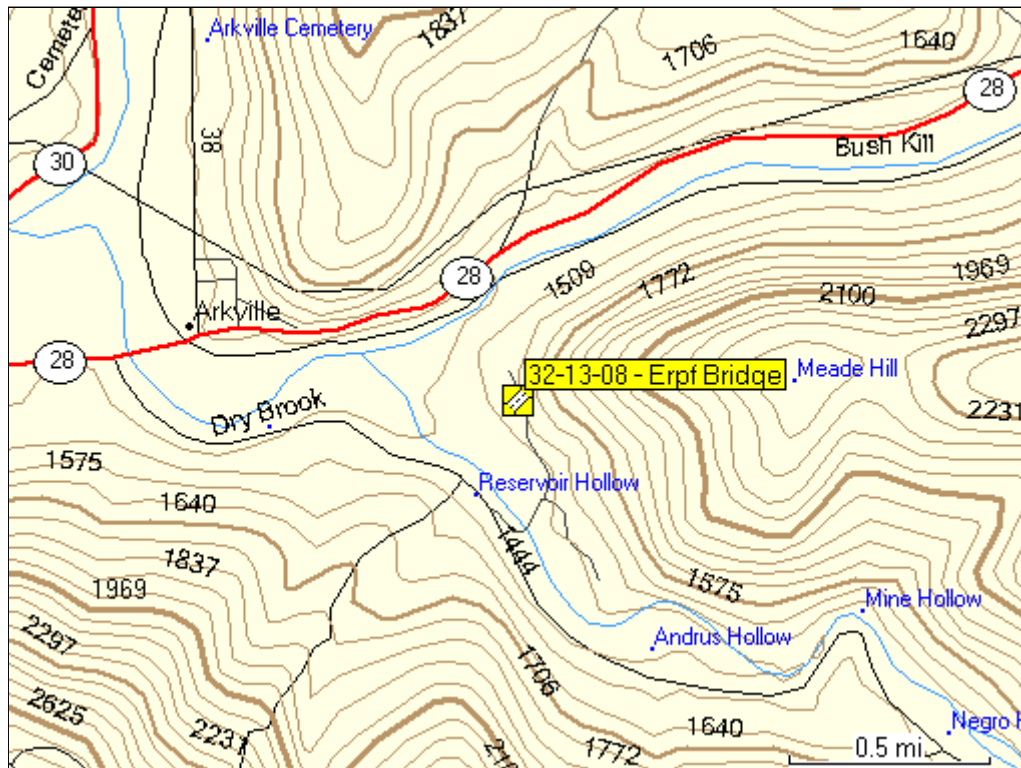
Unknown

### Truss / Arch

Town Lattice Truss

No photo available

## Location Map



### Location

From Arkville on NY28, then 0.9 miles left on Dry Brook Road, 0.4 miles left on dead end road, cross bridge to large house and walk 0.1 miles to bridge. Ask for permission to visit. This bridge is in the town of Arkville, in Delaware County.



[Return to New York Covered Bridges](#)  
Last Modified: April 01, 2005 10:59:28 A.M.